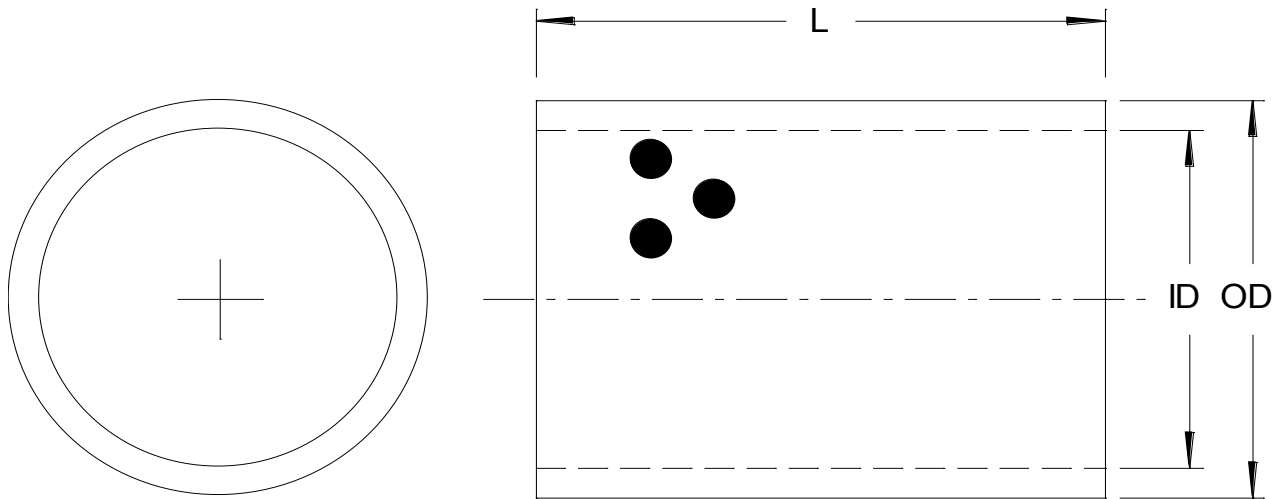


If a standard bushing won't do the job, SelfLube has the capability to produce a custom bushing to your *exact* specifications:

- Clamp in or press fit
- With/without shoulders
- With/without graphite



Size Range and Tolerances			
Feature	Min	Max	Std Tolerance
ID*	.75	6	ID < 2 +.0005/-0 ID > 2 +.0006/-0 ID > 3 +.0009/-0 ID > 4 +.0010/-0
OD**	1.125	7	<b>Press fit:</b> same as ID <b>Clamp in:</b> same as ID but with reversed signs (i.e., +0/-0.0005)
L (length)	.5	8	+0/-0.030
Wall thickness for all bushings	.2	.5	
Material	Aluminum Bronze with/without Graphite Plugs		

\*For clearance purposes, bushing IDs are normally about .001 larger (which increases with larger IDs) than OD of the corresponding pin.

\*\* OD tolerances are different depending upon whether the bushing is designed to be pressed in or clamped in. Press fit bushings must be *slightly larger* than the hole so the tolerance goes to the "plus side". Clamp in bushings (also called demountable bushings) are just the opposite. Since they are designed to be easily removed, they must be *slightly smaller* so their tolerances go to the "minus side".